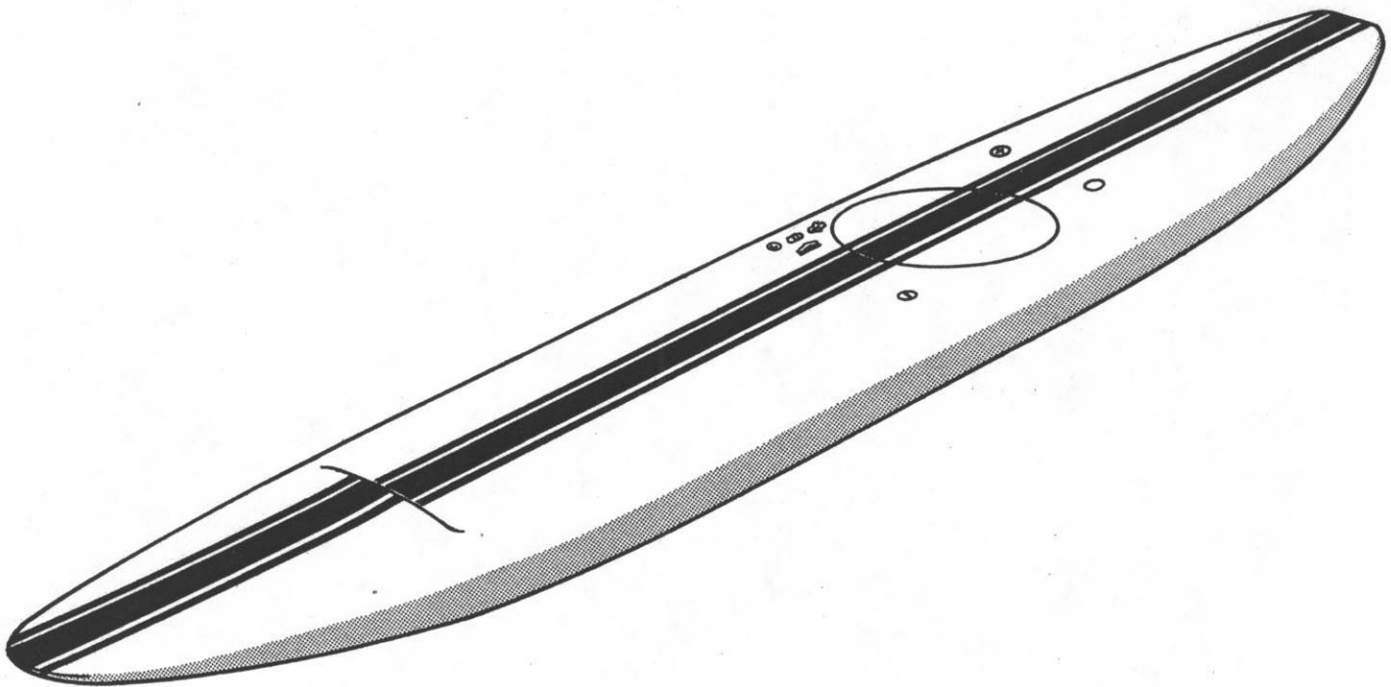


\$2.00

# **SERVICE MANUAL**

## **MODEL JB 100 JET BOARD**



**JET BOARD**  
CORPORATION

9255 SUNSET BOULEVARD/LOS ANGELES, CALIF. 90069

(213) 878-2266

## TABLE OF CONTENTS

Part		Page
1.	OPERATION AND MAINTENANCE	1
1-1.	Model JB-100 Jet Board Specifications	1
1-2.	Jet Board Construction	1
1-3.	Engine and Jet Stream	1
1-4.	Air Intake Valve	1
1-5.	Choke Control	1
1-6.	Starter	1
1-7.	Fuel Tank and Cap Assembly	1
1-8.	Primer Assembly	2
1-9.	Throttle	2
1-10.	Fire Extinguisher	2
1-11.	Safety Switch and Magnetic Plug Assembly	2
1-12.	Engine Compartment Cover	2
1-13.	Water Intake	2
1-14.	Skeg	2
1-15.	Carrying Handle	2
1-16.	Break-In Instructions	2
1-17.	Fuel Mixture	3
1-18.	Starting the Engine	3
1-19.	Troubleshooting/Checklist	3
1-20.	Engine Removal	4
1-21.	Fire Extinguisher Replacement	4
1-22.	Starter Removal and Repair	4
1-23.	Ejector Valve Cleaning	4
1-24.	Hull Puncture Repair	4
1-25.	Paint Retouching	4
1-26.	Removable/Repairable Assemblies	5
1-27.	Epoxied Assemblies	5
1-28.	Seasonal Storage	5
1-29.	Jet Board Accessories	5
1-30.	Parts and Factory Service	5
2.	ILLUSTRATED PARTS BREAKDOWN	6
Figure 1.	Model JB-100 Jet Board	7
Figure 2.	Sump Pump Assembly	8
Figure 3.	Air Intake Valve Assembly	8
Figure 4.	Choke Control Assembly	9
Figure 5.	Starter Handle Assembly	10
Figure 6.	Starter Assembly	11
Figure 7.	Fuel Tank Cap Assembly	12
Figure 8.	Throttle Assembly	12
Figure 9.	Fire Extinguisher Assembly	13
Figure 10.	Safety Switch and Magnetic Plug Assembly	14
Figure 11.	Engine Compartment Cover	15
Figure 12.	Exhaust Valve Assembly and Skeg	16
Figure 13.	Engine Attaching Parts	17
Figure 14.	Model JB-750 Engine	19
Figure 15.	Primer Assembly	21
	WARRANTY	22

# PART 1. OPERATION AND MAINTENANCE

## 1-1. MODEL JB-100 JET BOARD SPECIFICATIONS

LENGTH: 11 Feet  
WIDTH: 26-1/2 Inches  
THICKNESS: 6-1/2 Inches  
WEIGHT: 65 Pounds (approximately)  
LOAD CAPACITY: 400 Pounds  
HULL: Aluminum 6061-T4 (0.050)  
INTERNAL HULL: Urethane Foam with  
2 Pound Density  
FINISH: Primed and Painted with Top Grade  
Epoxy Paint (Navy Mil-A-8625A)  
COLORS: Blue; Tangerine; Yellow; Green  
SAFETY SWITCH: Magnetic Type  
SKEG: 1 Standard-Blank available to shape  
your own  
FIRE EXTINGUISHER: 10 Ounce CO<sub>2</sub>  
CARRYING HANDLE: Retractable. Located  
at Center of Gravity of Board  
OPTIONAL EXTRAS: Live Bait Tank; Storage  
Compartment for Skin Diving Equipment;  
Beach Back Chair; Collapsible Anchor;  
Jousting Poles; Car Top Rack; Running Lights,  
battery operated

## JET DRIVE AND ENGINE

HORSEPOWER: 6-1/4  
TYPE: 2 Cycle, Single Cylinder, Loop  
Scavenged, Water Cooled  
SPEED: 10 mph (approximately)  
THROTTLE: Roller Type; Operated by Hand  
or Foot in Standing, Sitting, or Kneeling Posi-  
tion (located forward of the Engine Compart  
BORE: 2-3/8 Inches  
STROKE: 1-11/16 Inches  
DISPLACEMENT: 7.5 Cubic Inches  
MAGNETO: Solid State and Gap = 0.012 Auto-  
matic Advance  
IGNITION TIMING: 26 Degrees Before Top  
Dead Center  
SPARK PLUG: Champion J-8J 0.030 Gap  
STARTER: Automatic Recoil Type  
CARBURETOR: Diaphragm with Integral Pump  
Variable Idle and High Speed Jets  
LUBRICATION: Positive Mist Type  
COMPRESSION RELEASE: Manual, Integrated  
with Choke Control  
FLAME ARRESTER: Bendix, Coast Guard  
Approved  
FUEL TANK CAPACITY: Two Gallons (approx)  
RUNNING TIME: Four Hours (approximately)  
FUEL MIXTURE: Regular Gasoline mixed  
with SAE No. 30 Oil (1/2 Pint per Gallon)  
ENGINE COMPARTMENT: Watertight with  
"O" Ring Seal. Additionally, any Water that  
enters Compartment through Breathing Tubes  
is constantly evacuated by the Sump Pump  
EXHAUST: Water Cooled Muffler with a Spring  
Loaded Exhaust Valve which is kept closed  
when Engine is inoperative

## 1-2. JET BOARD CONSTRUCTION

The basic Jet Board hull is made of molded aluminum. The hull, except for the engine compartment, is filled with urethane foam for added strength and buoyancy. As shown by the dotted lines, Figure 1, there are breathing passages through the foam to the engine compartment. The engine compartment is equipped with a sump pump, Figure 2, to keep the compartment free from water. Water that enters the board is discharged through a discharge port on the side of the board. Before operating the Jet Board, check the discharge port to make certain it is free of obstructions.

## 1-3. ENGINE AND JET STREAM

Your Jet Board is propelled by a water jet system driven by a two-cycle gasoline engine. The jet system is an integral part of the basic hull and cannot be removed. Given proper care and cleaning as prescribed in this manual, the water jet unit will enjoy a long life. The engine and other attaching components are removable for normal servicing and cleaning.

## 1-4. AIR INTAKE VALVE

The air intake valve, Figure 3, provides air to the Jet Board engine. In the normal top up position the air intake is open. Should the Jet Board capsize, the air intake valve automatically closes - preventing water from entering the engine compartment.

### Note

Be sure that the air intake valve is clean when operating the Jet Board.

## 1-5. CHOKE CONTROL

The choke control, Figure 4, operates the carburetor choke and engine compression release. The compression release reduces engine compression during starting. To start the engine raise and turn choke control. Pull starter handle; when engine starts return control to normal position.

## 1-6. STARTER

The Jet Board is equipped with an automatic recoil starter, Figures 5 and 6. The starter cord is approximately four feet long. When starting the engine, it should not be necessary to pull the cord more than 5 to 10 times before the engine starts. Should you have difficulty in starting the engine, consult the troubleshooting/probable cause section on page 3.

### Note

Do not stand on your jet Board and pull starter cord to maximum limit as damage can result to starter unit.

## 1-7. FUEL TANK AND CAP ASSEMBLY

The fuel tank has a capacity of approximately two gallons and under normal operating conditions will provide approximately four hours running time. The cap assembly is shown in Figure 7.

## 1-8. PRIMER

The primer is provided to facilitate easy engine starting. Before starting the engine, press and release the primer three times. Do not over-prime the engine; excessive priming will flood the carburetor and foul the spark plug.

## 1-9. THROTTLE

The throttle, Figure 8, can be operated by hand or with the foot when standing. To increase and decrease engine speed rotate the throttle forward and backward, respectively.

## 1-10. FIRE EXTINGUISHER

The engine compartment is equipped with a fire extinguisher, Figure 9. This safety feature is provided for the protection of both the operator and the Jet Board equipment. In the event of a fire, activate fire extinguisher by turning the control clockwise.

### CAUTION

DO NOT REMOVE HATCH COVER  
AFTER FIRE EXTINGUISHER HAS  
BEEN ACTIVATED UNTIL HATCH  
COVER HAS COMPLETELY COOLED.

## 1-11. SAFETY SWITCH AND MAGNETIC PLUG ASSEMBLY

The safety switch and plug assembly, Figure 10, is your ignition key. The engine will not start or continue to operate unless the magnetic plug is in place. The safety switch and plug assembly is provided primarily for personal safety and convenience when operating the Jet Board.

### Note

The safety belt, with magnetic plug attached, should always be worn while operating the board. Should you leave the board, the plug will disengage and the Jet Board will stop immediately.

## 1-12. ENGINE COMPARTMENT COVER

The engine compartment hatch cover is secured in place by three twist locks. To remove, place your fingers in finger-holes in hatch cover, press down and turn cover counterclockwise. To ensure a water-tight compartment, a rubber seal is provided around the cover. When replacing the hatch cover, be sure that the mating surfaces of the hatch and cover are free of dirt, sand, and other foreign matter. Occasionally lubricate seal for easy operation.

## 1-13. WATER INTAKE

The water that propels the Jet Board is drawn up through an opening in the bottom of the board. This area should be kept clear and free of weeds and other obstructions.

## 1-14. SKEG

Your Jet Board is equipped with a standard skeg, Figure 12. The skeg is secured to the board by two screws and can easily be removed and replaced.

## 1-15. CARRYING HANDLE

The carrying handle is provided as a convenience in transporting the Jet Board. To retract the handle for use, pull up and out at the center of the handle. Return handle to normal stowed position before using the Jet Board. Maximum weight on the handle should not exceed 100 pounds.

## 1-16. BREAK-IN INSTRUCTIONS

Any fine precision machinery requires certain attention to obtain the best operating results. Alteration of operating speed is recommended as the best method of breaking-in the engine. During the initial four hours of running time observe the following:

1. Use a fuel mixture of 3/4 pint of outboard motor oil to one gallon of regular gasoline.
2. Operate engine at half speed.
3. After four hours running time tighten all visible nuts, bolts and screws.

During the next four hours of running time:

1. Use a fuel mixture of 1/2 pint of outboard motor oil to one gallon of regular gasoline.
2. Run engine at full speed for five minutes of each hour for the next four hours.

## 1-17. FUEL MIXTURE

After the break-in period is complete, use a mixture of 1/2 pint of outboard motor oil to one gallon of regular gasoline. If ready mixed fuel is used, the ratio of gasoline to oil should be 50 to 1.

## 1-18. STARTING THE ENGINE

The Jet Board engine is water-cooled and should not be started or run unless the board is in water. Before starting engine put on life jackets.

### CAUTION

STARTING AND OPERATION OF THE ENGINE OUT OF WATER WILL RESULT IN DAMAGE TO THE ENGINE.

To start engine:

1. Remove hatch cover.
2. Fill fuel tank.
3. Place board in water.
4. Pull choke assembly up and rotate 90 degrees clockwise.
5. Fasten safety belt on body and insert magnetic plug.

### CAUTION

DO NOT START ENGINE UNLESS SAFETY BELT IS ON.

6. Set throttle to full speed.
7. Press primer three times.
8. Pull starter rope until engine starts. Immediately after engine starts apply sufficient weight on top of board to ensure that the pump is drawing water. Plug start handle securely back in starter assembly.

### Note

If engine will not start, refer to troubleshooting check list on page 3.

9. Return choke to normal position by rotating it 90 degrees counterclockwise.
10. Return throttle to minimum speed.
11. Replace hatch cover.

### Note

We recommend spraying engine with WD-40 after each use.

## 1-19. TROUBLESHOOTING/CHECKLIST

The following checks are provided as guidelines. It is not necessary to perform these checks in the order listed. It is recommended that the complete checklist be reviewed and that the checks most appropriate to the circumstances under which the trouble occurred be checked first.

1. Check gas lines in engine compartment to ensure that none have come loose.
2. Check to ensure that spark plug wire is attached to cap of plug; if not, reattach.
3. Check to ensure that choke and compression release cables are attached to choke control.
4. If water jet output is making a gurgling sound, check the exhaust valve (Figure 12) for weeds, paper or other foreign matter. Use pliers to remove exhaust valve if necessary to remove foreign matter.
5. Check for dirt or other foreign material on the water intake restricting water flow to the pump. Clean by directing a garden hose, or other source of water pressure, into the water intake.
6. Check to ensure that magnetic switch wires have not been broken. Trace the wire from the magnetic choke assembly through the magnetic coil, follow the wire from the ground to the magnetic choke assembly. If either wire is broken, replace it.
7. Check underside of magnetic key assembly for foreign material stuck to the magnet.

When the problem has been corrected, refer back to the starting procedures on page 3 and start the engine. If the engine will not start:

1. Remove the spark plug and pull the starter rope approximately 15 times to clear the engine of excess gasoline.
2. Replace spark plug and attach spark plug wire.
3. Check for excessive water in the engine compartment. If this condition exists, remove the Jet Board from the water and tip it until all water is removed.
4. Refer to starting procedures and start engine.
5. If trouble persists, install a new spark plug.

## 1-20. ENGINE REMOVAL (See Figure 13)

1. Remove hatch cover.



## 2. Disconnect fuel line (1) from carburetor.

### Note

Plug end of fuel line to avoid fuel spillage into engine compartment.

3. Remove screw and clamp and disconnect choke linkage (2).
4. Disconnect throttle linkage (3) by grasping it in the center and lifting up. Linkage arm will bow in the middle and snap free of carburetor.
5. Pull approximately 12 inches of starter cord out and tie a knot in the cord directly in front of starter.
6. Remove metal cup in starter handle and untie knot. Pull starter rope into engine compartment.
7. Remove six hex head nuts and washers (4) holding engine to water drive housing.
8. Disconnect hose (6) to muffler.
9. Lift engine up and toward the front of the Jet Board.

## 1-21. FIRE EXTINGUISHER REPLACEMENT (See Figure 9)

To replace the fire extinguisher the engine must be removed. Refer to Engine Removal procedures on page 3.

1. Raise piston shaft with finger as shown and pull fire extinguisher out.
2. Loosen four allen head screws and remove bevel gears.
3. Install new fire extinguisher cartridge and tighten allen head retaining screws.
4. Replace fire extinguisher assembly in hull.
5. Replace engine.
6. Check to be sure all nuts, screws, and hose connections are secure.

## 1-22. STARTER REMOVAL AND REPAIR (See Figures 5 and 6)

To replace the starter rope, the starter assembly must be removed from the engine.

1. Pull starter handle out approximately 12 inches.
2. Tie a knot in starter rope directly in front of starter.

3. Disassemble starter handle (10), and cut off the knot.
4. Remove four screws securing starter assembly to engine and lift starter out of hatch.
5. Remove screw (1) and disassemble starter assembly.
6. Insert one end of rope in pulley (6) and tie a knot at the end as shown.
7. Tie a knot in rope allowing sufficient slack to reinstall starter assembly in Jet Board.
8. Wind recoil spring with sufficient tension to take up all slack rope when unit is reinstalled.
9. Reassemble starter assembly as shown.
10. Install starter in Jet Board, and replace the four retaining screws.
11. Thread rope through starter housing in side of Jet Board.
12. Replace handle (10) as shown, and untie knot in rope by starter assembly.

## 1-23. EJECTOR VALVE CLEANING

As shown on page 2, there are two ejector valves in the engine compartment. The valves should be removed and cleaned on a monthly basis to keep them free of oil and grease. To remove valves from engine compartment, remove hose clamps and disconnect hoses from valves. Soak the valves in warm soap and water to remove grease.

## 1-24. HULL PUNCTURE REPAIR

To repair hull punctures use Jet Board Epoxy No. 101. Clean area surrounding puncture with sand paper No. 100, and alcohol. Apply sufficient epoxy to seal puncture and fill surrounding dent, and smooth the surface. Allow approximately 24 hours for epoxy to set and 7 days for epoxy to harden. Hardened epoxy can be painted over immediately.

### CAUTION

DO NOT ATTEMPT TO WELD A PUNCTURED HULL. IF WELDING IS REQUIRED, CALL THE JET BOARD FACTORY.

## 1-25. PAINT RETOUCHING

Jet Boards come in 4 colors and retouch paint is available in spray-cans and bottles.

Blue 300/69  
Tangerine 310/69

Green 320/69  
Yellow 330/69

## 1-26. REMOVABLE/REPAIRABLE ASSEMBLIES

## 1-27. EPOXIED ASSEMBLIES

All assemblies in the Jet Board listed in the Illustrated Parts Breakdown are removable for repair or replacement. Removable assemblies are secured to the hull with JB-101 epoxy or screws. Items secured to the hull with epoxy are:

Starter Handle Assembly  
Throttle Assembly  
Hatch Cover Seal  
Carrying Handle Assembly  
Nozzle Assembly  
Choke Assembly  
Magnetic Switch Assembly  
Hatch Cover Latches  
Fire Extinguisher  
Control Assembly  
Primer Assembly

To replace a damaged assembly secured to the hull with epoxy:

1. Remove the damaged assembly by breaking it loose from the hull.
2. Scrape, cut or file old epoxy from surfaces of hull.
3. Clean mounting surface with sand paper (No. 100) and wipe clean with an alcohol soaked rag.
4. Apply Jet Board epoxy, No. 101, to hull mounting surface and install new assembly.
5. Allow 24 hours for epoxy to set and seven days for epoxy to harden.
6. Repaint as required.

## 1-28. SEASONAL STORAGE

The Jet Board should be thoroughly cleaned before storage. Recommended steps include:

1. Drain all fuel from tank.
2. Drain fuel lines and engine carburetor to prevent sludge and gum build-up.
3. Drain all water from Jet Board. Stand it on rear end to ensure that all water drains.
4. Remove spark plug. Pour 1/3 cup of outboard motor oil in spark plug hole and pull starter three or four times so oil coats all internal surfaces.
5. Remove rubber "O" ring from exhaust valve assembly and apply a thin coat of vaseline to "O" ring to prevent drying.
6. Spray engine and other exposed metal parts with WD40 to prevent rust.
7. Do not store the Jet Board upside down.

## 1-29. JET BOARD ACCESSORIES

A variety of accessories are available. They include:

Custom Skeg	Collapsible Anchor
Live Bait Tank	Jousting Poles
Beach Back Chair	Car Top Rack
Storage Compartment	Running Lights
for Skin Diving Equipment	

## 1-30. PARTS AND FACTORY SERVICE

For replacement parts or Jet Board service of a nature not provided in the service manual write or call:

Service Department  
Jet Board Corporation  
9255 Sunset Boulevard  
Los Angeles, California 90069  
(213) 878-2266

## PART 2. ILLUSTRATED PARTS BREAKDOWN

Figure	Title	Page
1	Model JB-100 Jet Board	7
2	Sump Pump Assembly	8
3	Air Intake Valve Assembly	8
4	Choke Control Assembly	9
5	Starter Handle Assembly	10
6	Starter Assembly	11
7	Fuel Tank Cap Assembly	12
8	Throttle Assembly	12
9	Fire Extinguisher Assembly	13
10	Safety Switch and Magnetic Plug Assembly	14
11	Engine Compartment Cover	15
12	Exhaust Valve Assembly and Skeg	16
13	Engine Attaching Parts	17
14	Model JB-750 Jet Board Engine	18
15	Primer Assembly	19



Figure 1. Model JB-100 Jet Board

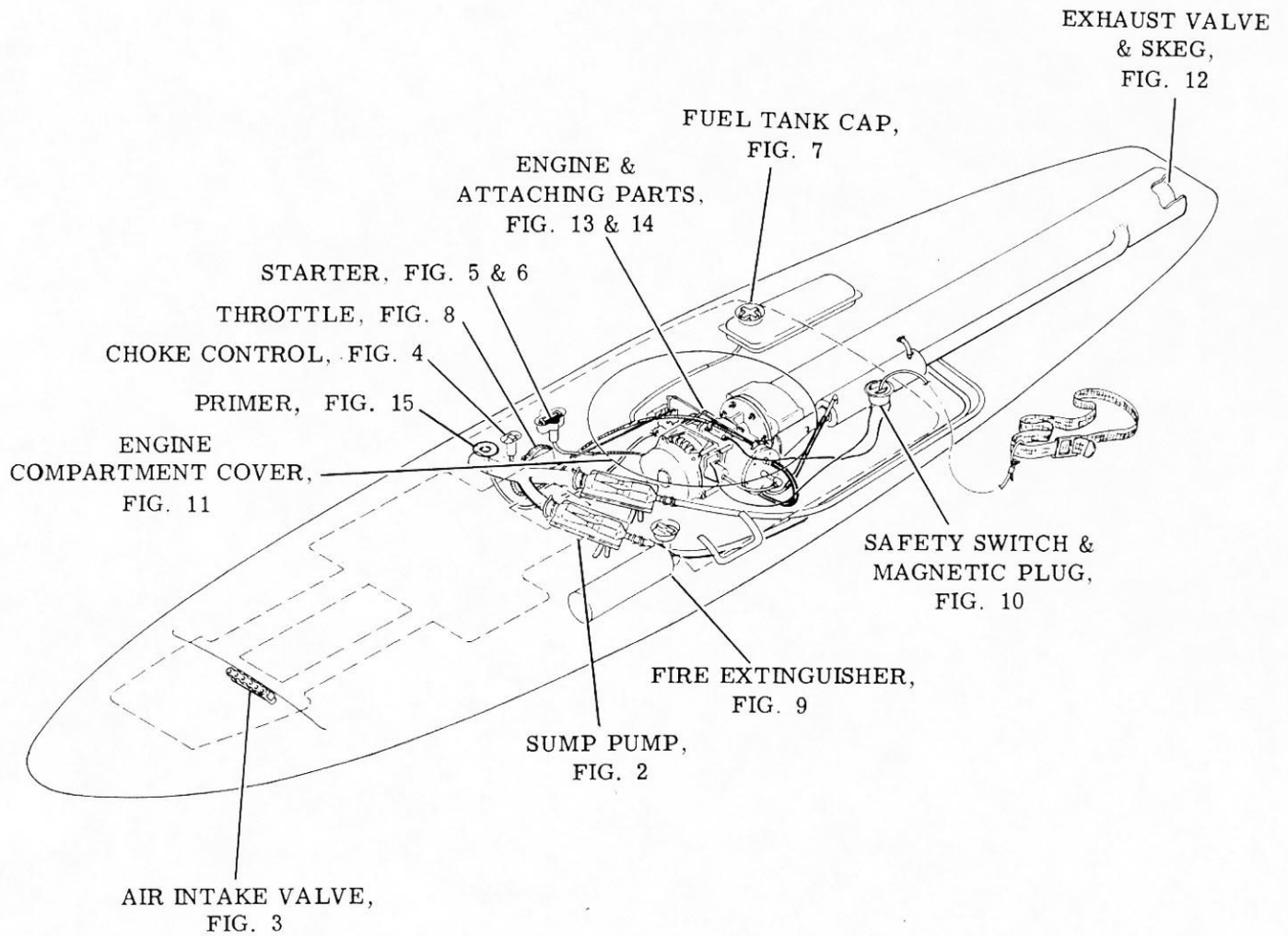


Figure 2. Sump Pump Assembly

Item	Part Number	Description
1	1100-124-3	Discharge Tube
2	1100-124	Hose Clamp, 5/8 Inch
3	1100-124	Ejector Valve Assembly
4	1100-124	Clamp, 1/2 Inch (2)
5	1100-124	Hose, Plastic, 1/2 Inch
6	1100-124-4	Aft Suction Tube
7	1100-124-5	Forward Suction Tube

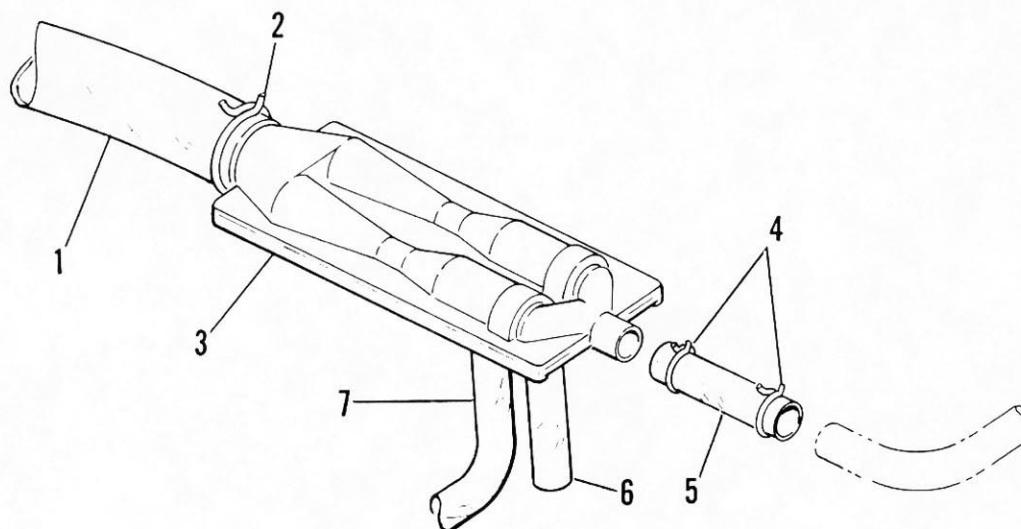


Figure 3. Air Intake Valve Assembly

Item	Part Number	Description
1	1100-108-1	Air Intake Body
2	1100-108-2	Ball (6 Required)
3	1100-108-4	Perforated Brass (No. 4)
4	1100-108-3	Screw, Self Tap, Pan Head (6 required)

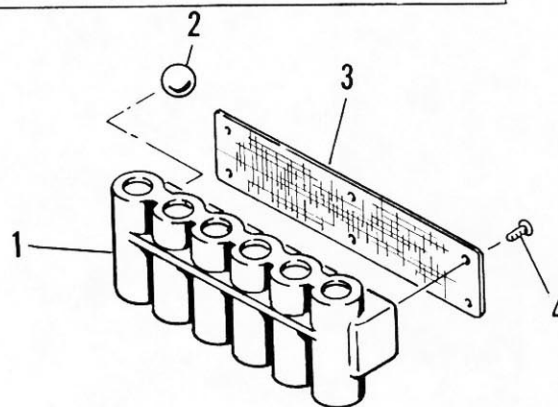


Figure 4. Choke Control Assembly

Item	Part Number	Description
1	1100-117-2	Knob
2	1100-117-3	Pin
3	1100-117-1	Cup
4	1100-117-4	Grommet
5	1100-117-5	Sleeve
6	1100-117-8	Compression Spring
7	1100-117-7	Pull Tube
8	1100-117-14	Cap
9	1100-117-13	Music Wire
10	1100-117-12	Guide Tube

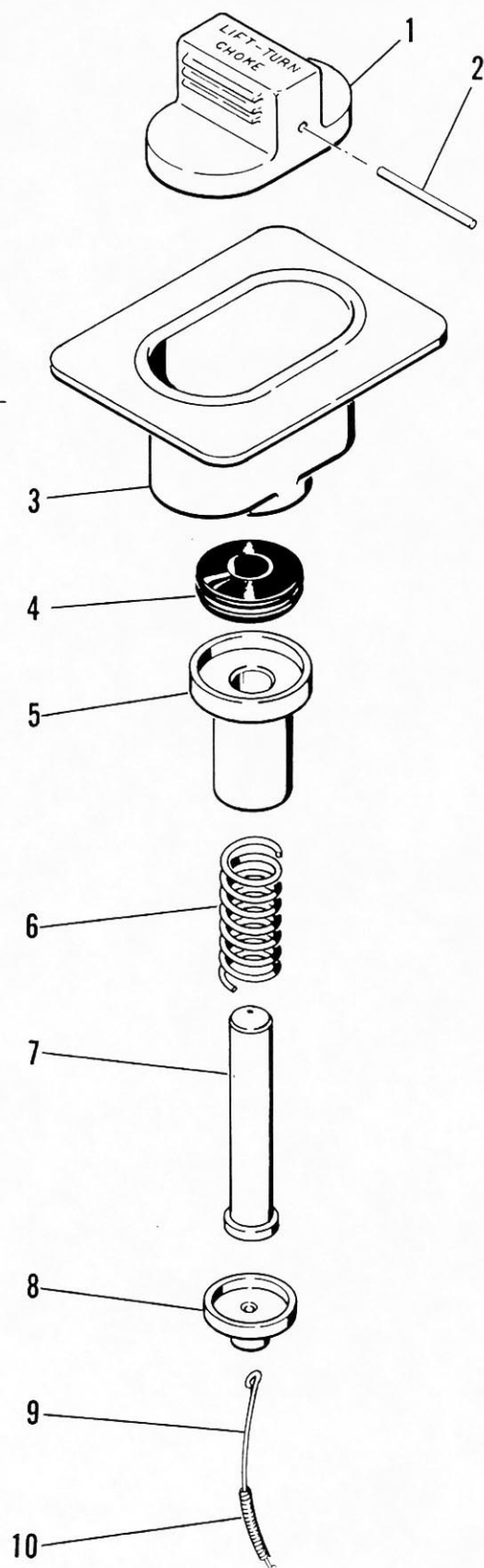


Figure 5. Starter Handle Assembly

Item	Part Number	Description
1	1100-118-6	Cable
2	1100-118-2	Handle, Pull
3	1100-118-1	Cup
4	1100-118-3	Tube
5	1100-118-5	Tube

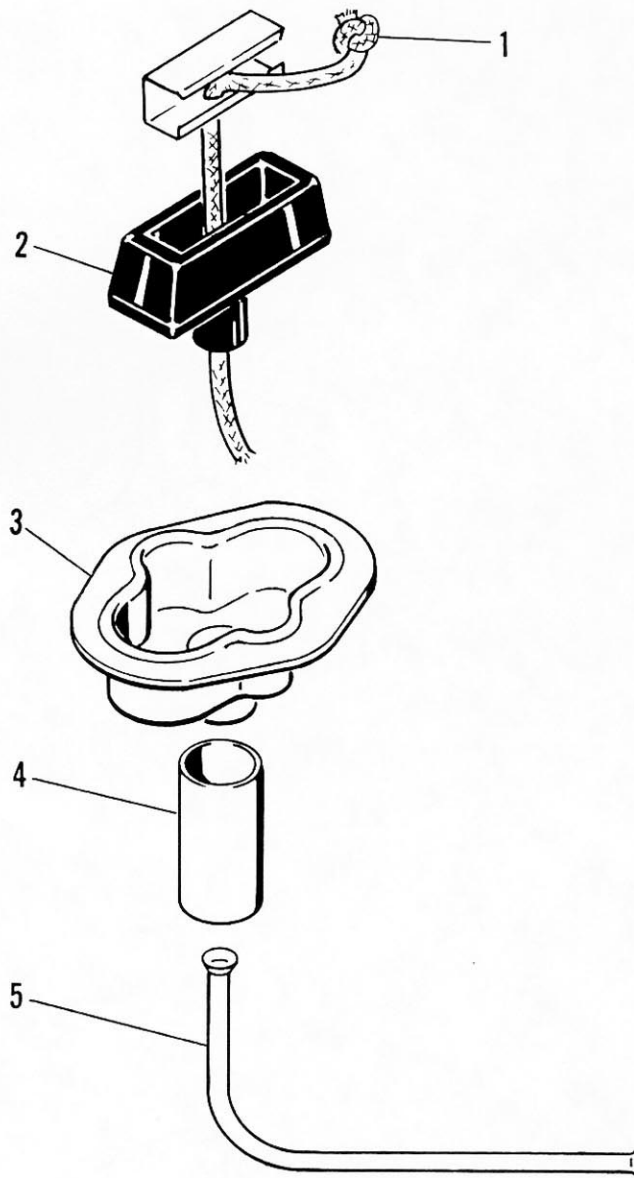


Figure 6. Starter Assembly

Item	Part Number	Description
1	JB570494	Screw, Retainer
2	JB570492	Retainer, Right Hand
3	JB570493	Spring, Brake
4	JB570498	Dog, Starter
5	JB570495	Spring, Right Hand Dog
6	JB590413A	Pulley
7	JB570497	Spring and Keeper Assembly
8	JB570496	Housing Assembly, Starter
9	JB590386	Rope, Starter
10	JB570491	Handle Assembly, Starter

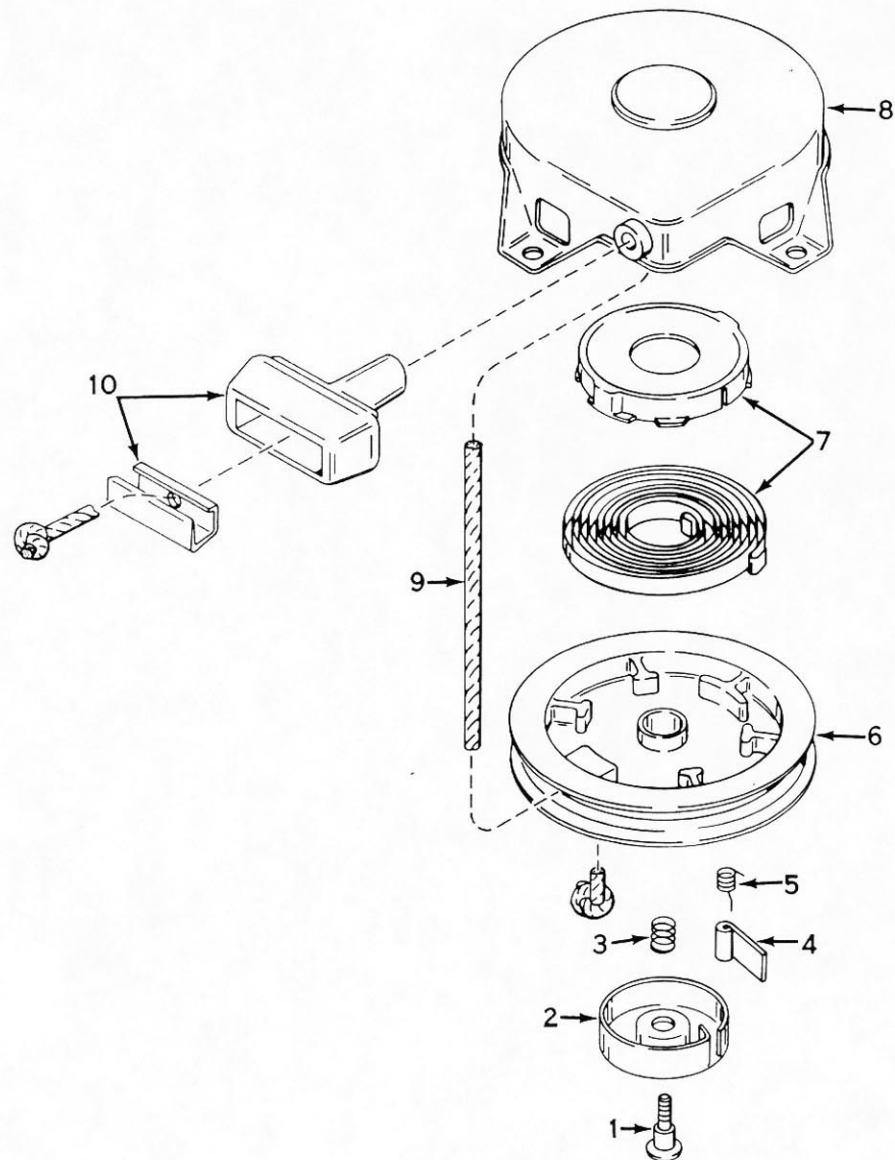




Figure 7. Fuel Tank Cap Assembly

Item	Part Number	Description
1	1100-121-4	Fuel Cap Assembly

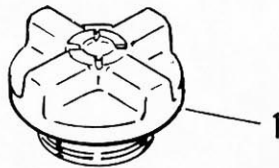


Figure 8. Throttle Assembly

Item	Part Number	Description
1	1100-109-6	Shaft (w)-5 Lever
2	1100-109-2	"O" Ring (Neoprene)
3	1100-109-4	Roller
4	1100-109-3	Set Screw
5	1100-109-1	Throttle Control Well

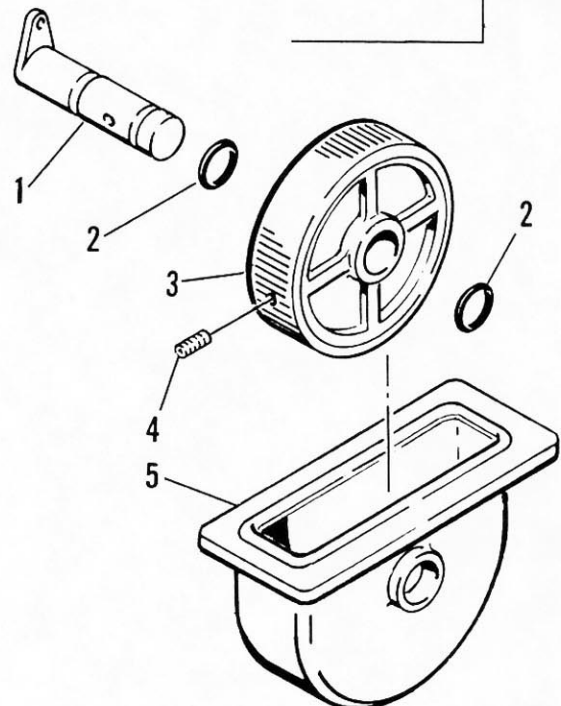


Figure 9. Fire Extinguisher Assembly

Item	Part Number	Description
1		6/32 x 1/2 Oval Head Phillips Machined Screw
2	1100-110-10	Knob
3	1100-110-1	Fire Extinguisher Cup
4	1100-110-5	Compression Spring
5		"O" Ring (2-12-C147-7)
6	1100-110-6	Pinion Shaft
7	1100-110-2	Aft Bevel Gear
8		Set Screw 6-32 x 1/4 SHSS (4 required)
9	1100-110-3	Forward Bevel Gear
10	1100-110-7	Fire Extinguisher
11	1100-110-8	Pipe, Sched 40

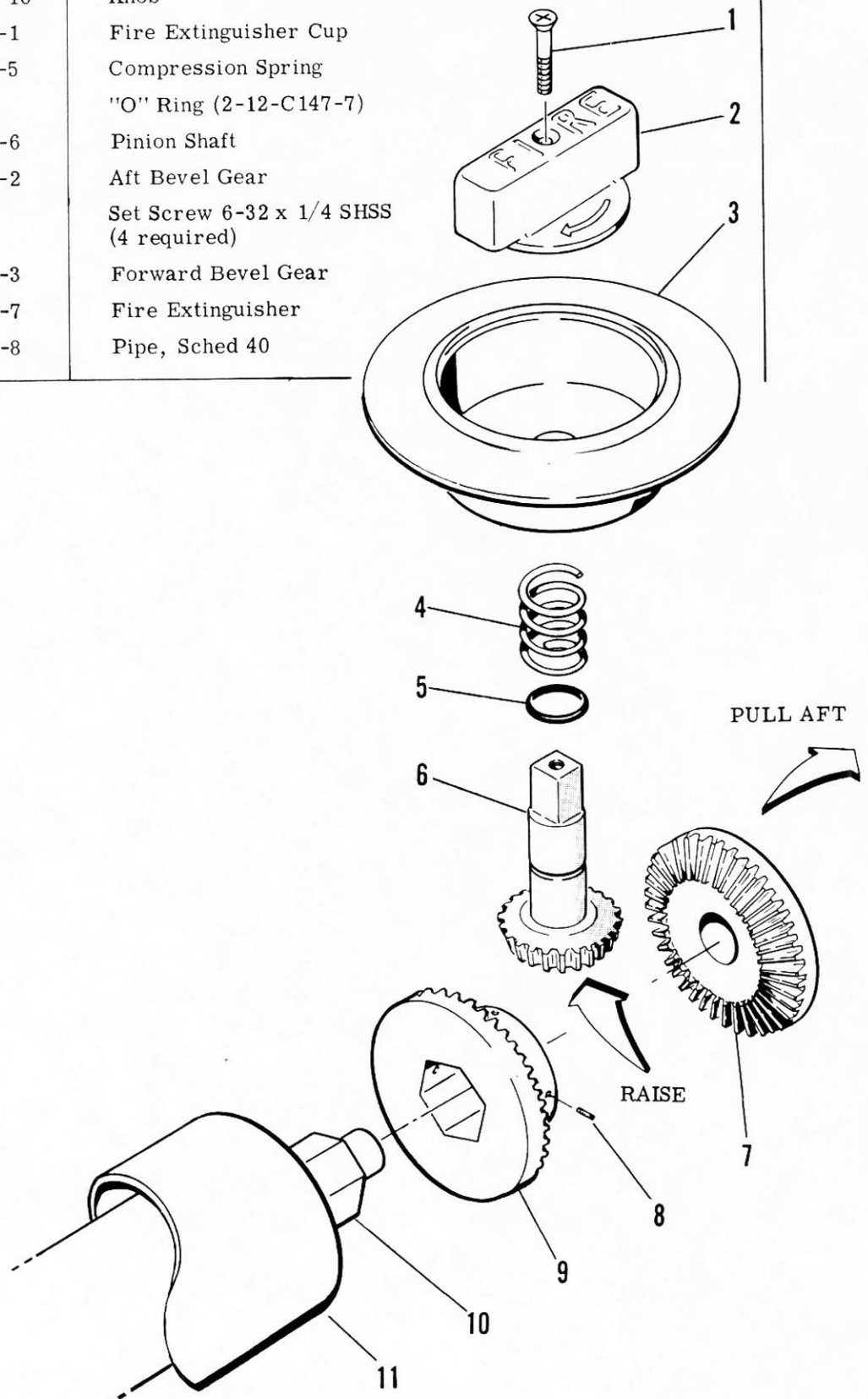


Figure 10. Safety Switch and Magnetic Plug Assembly

Item	Part Number	Description
1	1100-116	"D" Ring, Stainless Steel
2	1100-116-9	Web Belt Assembly
3	1100-116-8	Sleeve, Oval
4	1100-116-7	Stainless Steel Cable with Nylon Cover
5	1100-116-2	Key Body
6	1100-116-1	Magnetic Chuck Cup
7	1100-116-5	Reed Switch Holder
8	1100-116-10	Terminal, Push In
9	1100-116-6	Reed Switch
10	1100-116-3	Magnet

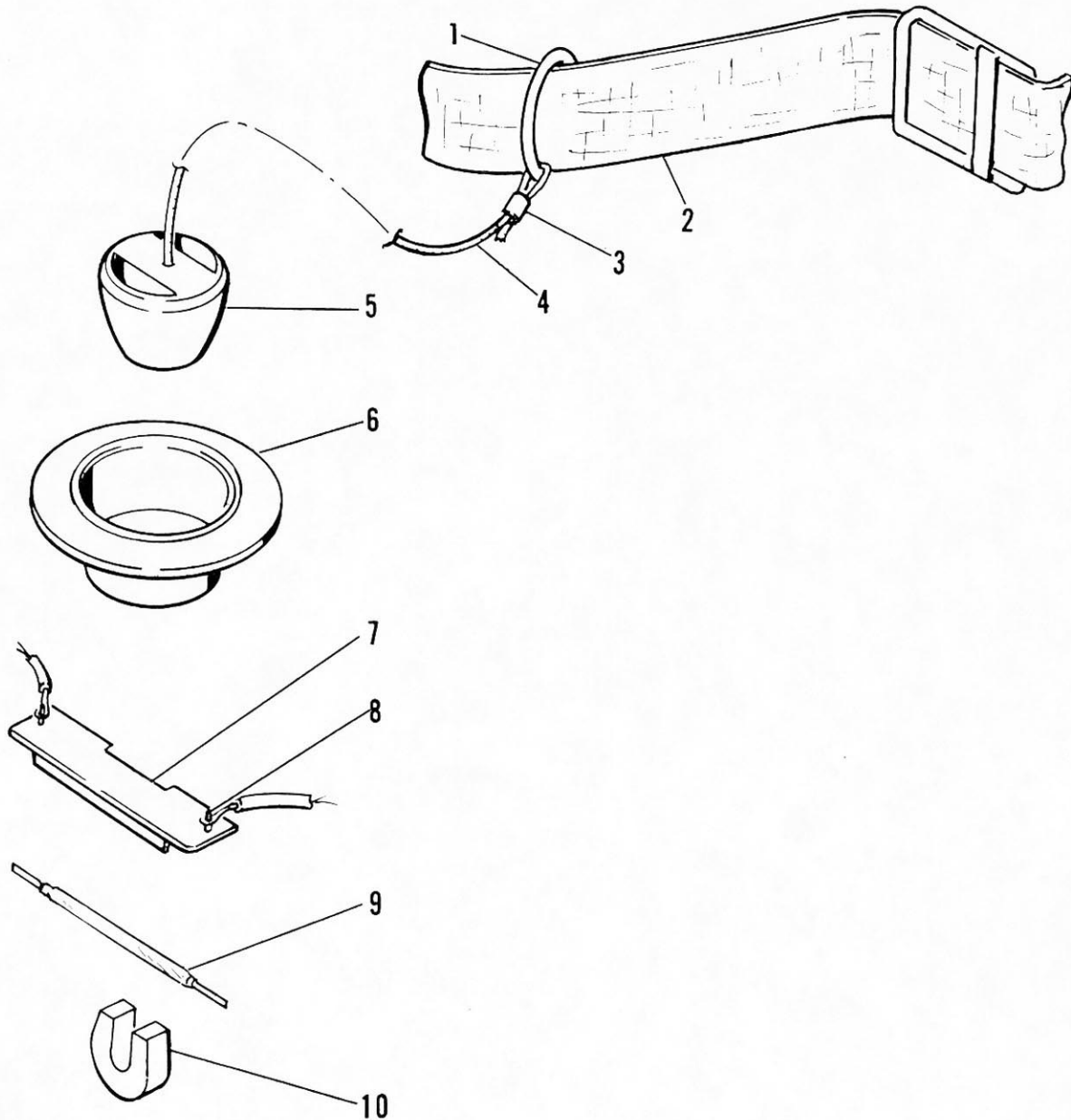


Figure 11. Engine Compartment Cover

Item	Part Number	Description
1	1100-105-4	Hatch "O" Ring Seal
2	1100-105	Hatch Cover

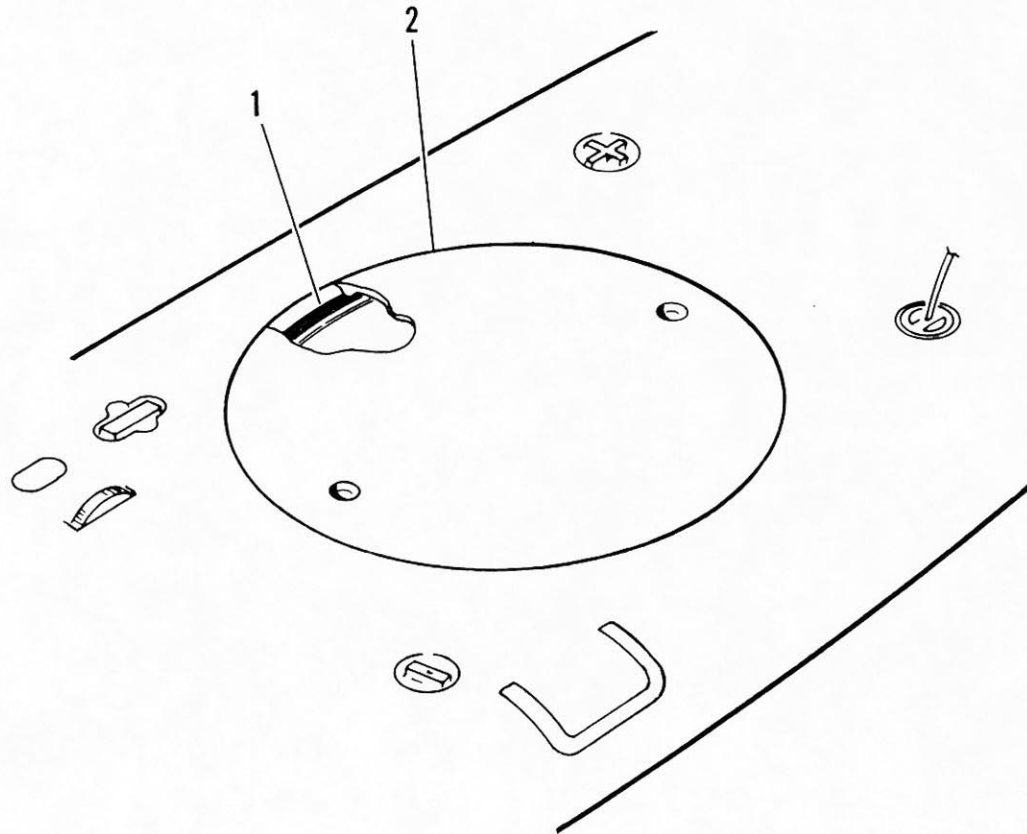


Figure 12. Exhaust Valve Assembly and Skeg

Item	Part Number	Description
1	1100-107-11	Exhaust Valve Tube
2	1100-107-9	Jet Tube
3	1100-107-12	Nozzle
4	1100-119-3	Valve Rod
5	1100-119-4	Roll Pin (2 Required)
6	1100-119-5	Compression Spring
7	1100-119-7	Washer
8	1100-119-1	Body, Exhaust Valve
9	1100-119-6	"O" Ring
10	1100-119-2	Valve
11		Flat Head Screw (10-32)
12	1100-111-1	Skeg
13		Screw, Socket Head (10-32)

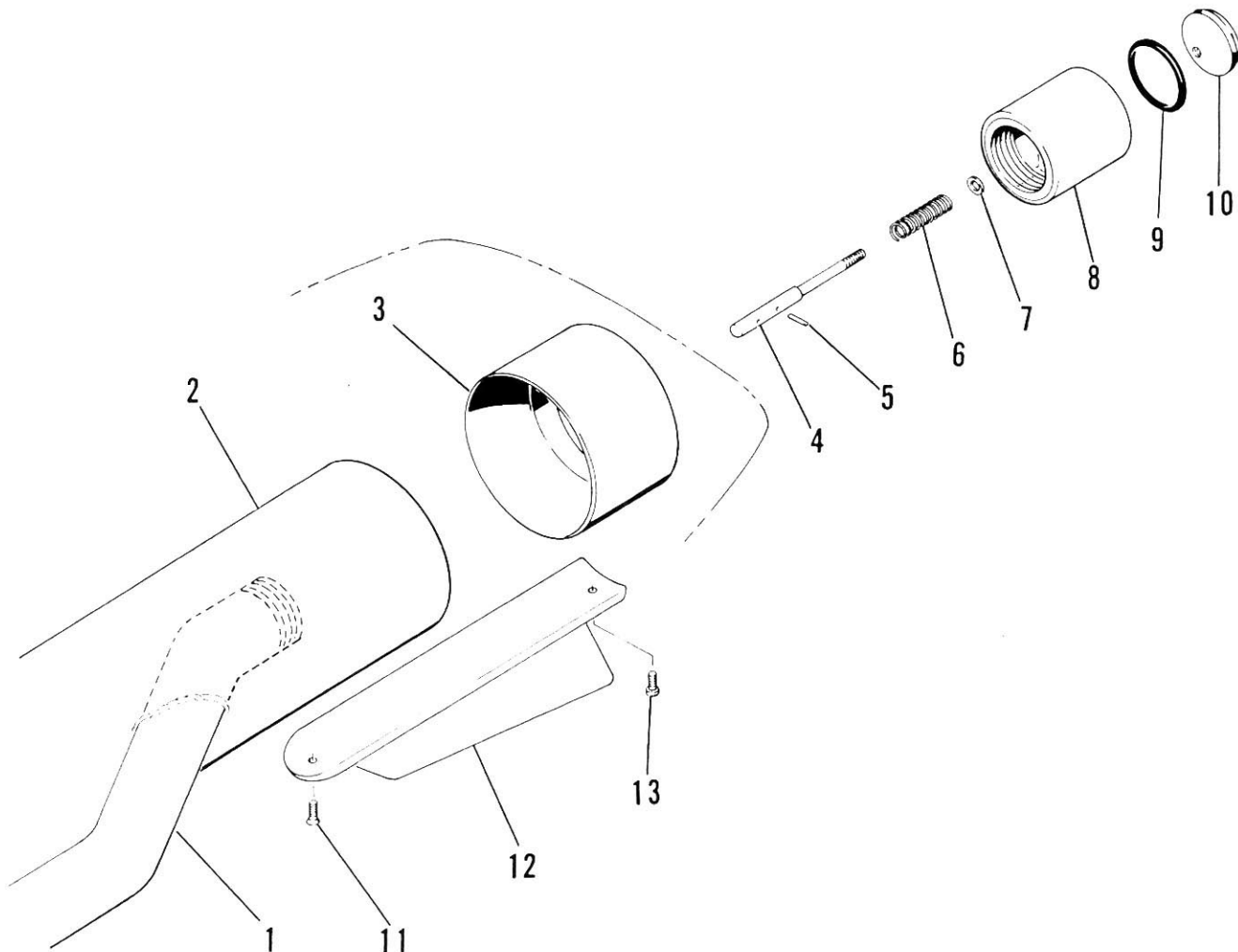




Figure 13. Engine Attaching Parts

Item	Part Number	Description
1	See Fig. 4 1100-109-7	Fuel Line, 3/8" x 12"
2		Compression/Choke Assembly
3		Throttle Linkage
4		Nut, 1/2-28

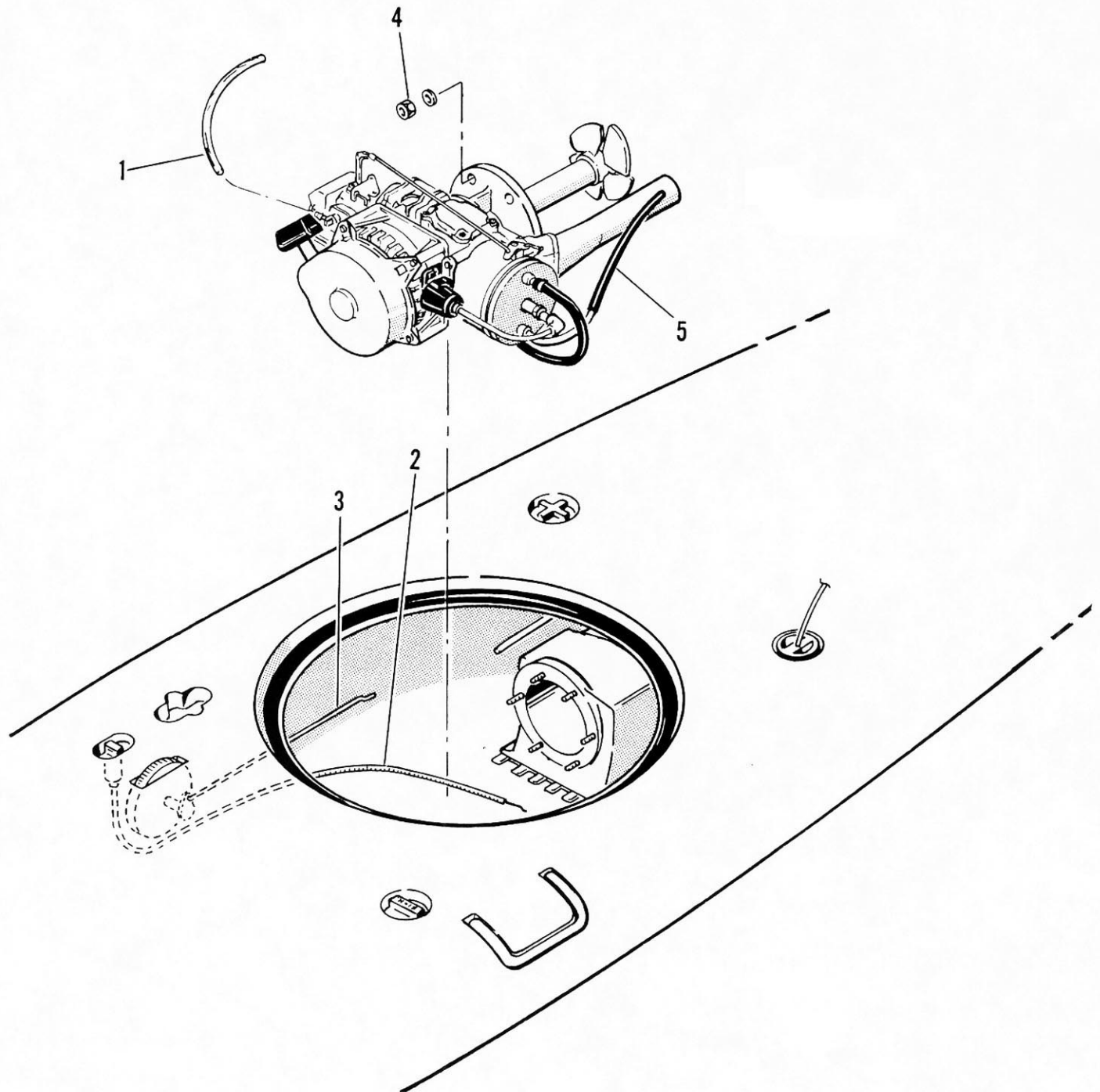


Figure 14. Model JB-750 Engine (Cont)

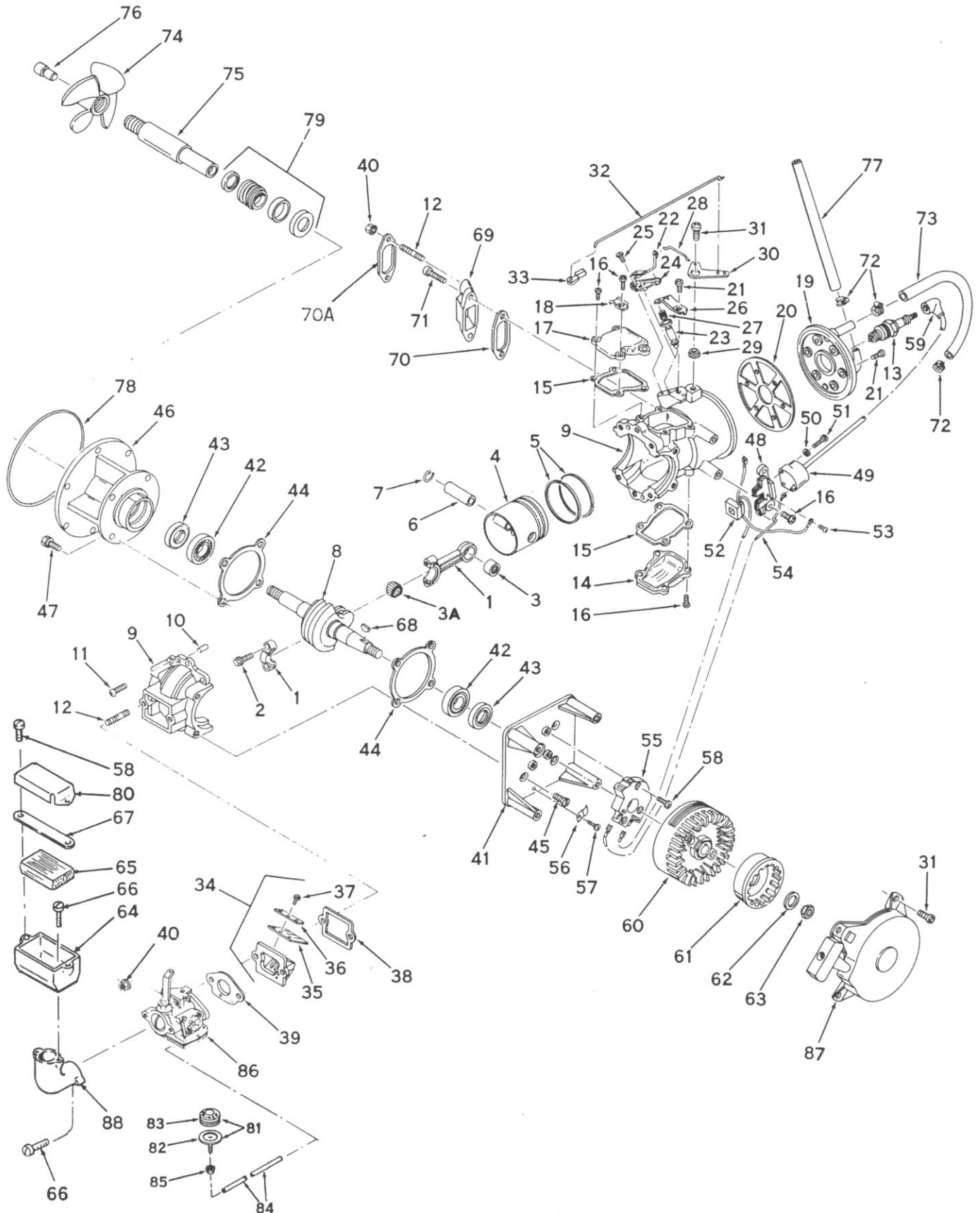


Figure 14. Model JB-750 Engine

Item	Part Number	Description
1	JB310231	Rod Assembly, Connecting (Including No. 2, 3, and 3A)
2	JB650702	Screw, Connecting Rod
3	JB530104	Bearing, Cartridge
3A	JB530139	Bearing Set, Needle (Set of 33)
4	JB310209	Piston
5	JB310210A	Ring Set, Piston
6	JB310178	Pin, Piston
7	JB310167	Ring, Retaining
8	JB570512	Crankshaft
9	JB570513	Block Assembly, Cylinder (Including No. 10 and 11)
10	JB570514	Pin, Dowel
11	JB570515	Screw, 10-24 x 3/4 Pan Flex Head
12	JB570516	Stud
13	JB610120	Plug, Spark
14	JB570517	Cover Plate, Bottom
15	JB570518	Gasket
16	JB570519	Screw, 10-24 x 5/8 Pan Flex Head
17	JB570520	Cover Plate, Top
18	JB27793	Clamp, Boden Wire
19	JB570521	Cover Assembly, Water Jacket
20	JB570522	Gasket, Water Jacket Cover
21	JB570523	Screw, 10-24 x 1/2 Pan Flex Head
22	JB570524	Lever Assembly, Compression Release
23	JB570525	Valve Assembly, Compression Release
24	JB570447	Bracket, Compression Release Lever
25	JB570526	Screw, 10-24 x 1/2 Pan Head Taptite
26	JB570527	Retainer, Compression Release Spring
27	JB570528	Spring, Compression Release
28	JB570529	Link, Compression Release
29	JB570530	Bushing
30	JB570531	Lever
31	JB570532	Screw, 1/4-20 x 1/2 Pan Flex Head
32	JB570533	Link, Choke
33	JB570268	Clip, Clevis
34	JB570534	Plate Assy., Reed (Incl. No. 35, 36 and 37)
35	JB570535	Reed
36	JB570536	Plate, Reed Hold Down
37	JB650506	Screw, 4-40 x 3/16 Round Washer Head
38	JB570537	Gasket, Reed Plate
39	JB510217	Gasket, Carburetor
40	JB570538	Nut, 1/4-28 Whiz-lock

Figure 14. Model JB-750 Engine (Cont)

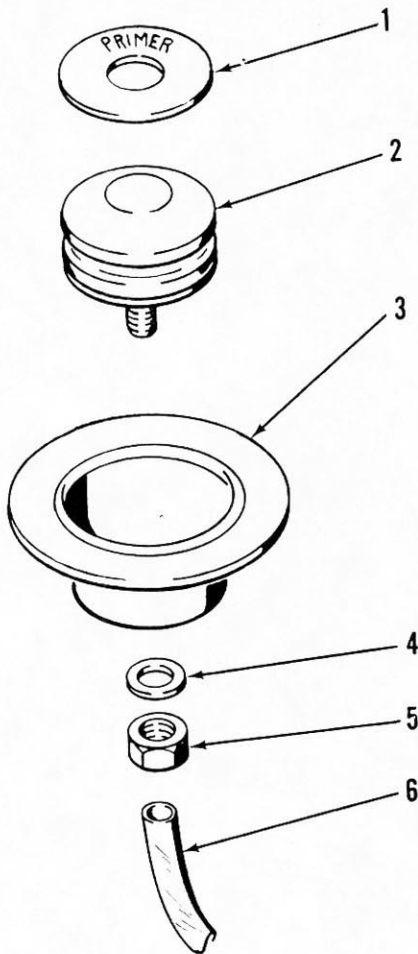
Item	Part Number	Description
41	JB570539	Cover Assy., Magneto End (Encl. No. 42 and 43)
42	JB530133	Bearing, Ball
43	JB570540	Seal
44	JB570541	Gasket, Cover
45	JB570542	Screw, 1/4-20 x 5/8 Flat Head Machined
46	JB570543	Cover Assy., P. T. O. End (Incl. No. 42 and 43)
47	JB570544	Screw, 1/4-20 x 5/8 Flat Head Machined
48	JB570545	Core and Plate Assembly
49	JB570546	Transformer, Pulse
50	JB570547	Washer, Lock
51	JB570548	Screw, Transformer
52	JB570549	Coil Assy., Generating
53	JB610384	Screw, Ground
54	JB570550	Lead wire, Low Tension
55	JB570551	Module, Ignition
56	JB570552	Clamp, Ignition Wire
57	JB570553	Screw, 6-32 x 3/8 Pan Head Taptite
58	JB570554	Screw, 8-32 x 9/16 Pan Flex Head
59	JB610118	Cover, Spark Plug
60	JB570555	Flywheel
61	JB570556	Cup, Starter
62	JB570557	Washer, Flat
63	JB570558	Nut, Flywheel
64	JB570559	Housing, Spark Arrester
65	JB570560	Arrester, Spark
66	JB570561	Screw, 10-32 x 1/2 Pan Flex Head
67	JB570562	Retainer, Spark Arrester
68	JB650455	Key, Flywheel
69	JB570563	Adapter, Muffler
70	JB510207	Gasket, Exhaust, Aluminum
70A	JB510207	Gasket, Exhaust
71	JB570564	Screw, 1/4-20 x 7/8 Socket Head Cap
72	JB570565	Clamp, Hose
73	JB570566	Hose, Water Outlet
74	JB570567	Propeller
75	JB570568	Shaft, Propeller
76	JB570569	Shaft, Stub
77	JB570570	Hose, Water Inlet
78	JB570571	"O" Ring
79	JB570572	Seal, Propeller Shaft
80	JB570574	Shield, Air intake

Figure 14. Model JB-750 Engine (Cont)

Item	Part Number	Description
81	JB32182	Primer Assy.
82	JB32184	Adapter, Primer
83	JB32183	Bulb, Primer
84	JB570576	Line, Primer
85	JB650456	Nut, 1/4-20 Hex
86	JB631577	Carburetor
87	JB590471	Starter, Rewind
88	JB31431	90 Degree Elbow

Figure 15. Primer Assembly

Item	Part Number	Description
1	1100-128-2	Cover Assembly
2	JB32183	Primer Bulb
3	1100-128-1	Primer Cup
4		Washer, 1/4 inch lock
5		Nut, 1/4-20 Hex
6	JB57057	Primer Line





# WARRANTY

JET BOARDS and the jet power pac have been carefully designed, engineered and constructed of quality materials to provide outstanding, trouble free performance. They are built to meet rigid specifications and carefully tested and adjusted before they leave the factory.

Jet Board Corporation is proud of the JET BOARD and the jet power pac and stands behind them. Like any piece of equipment, the JET BOARD and the jet power pac require a reasonable amount of care to keep them in good condition. This responsibility is yours.

All Jet Board Corporation products are guaranteed to be free from defects in material and workmanship at the time of shipment. However, Jet Board Corporation cannot assume any responsibility or guarantee any products or materials in regard to usage.

No returns are allowable without prior written permission. All allowable returns must have the freight prepaid, as they will not be accepted otherwise.